

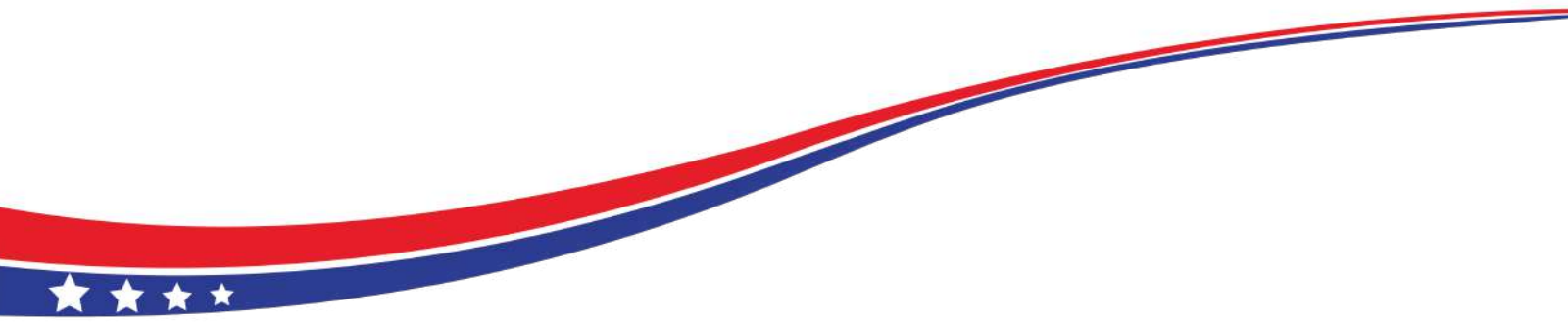
# AMERICAN VILLAGE :

## Step by step



WINTER





# Contents

---

1, 2 January

3 Winter Vocabulary

4 Word search

5 Animals of North America

5 Animal profile: Reindeer

6 Word search solution

7 Next month

# JANUARY





## January 1 : Polar Bear Plunge Day



A **polar bear plunge** is an event held during the winter where people swim in water despite the low temperature.

In the United States, polar bear plunges are usually held to raise money for a charitable organization. In Canada, polar bear swims are usually held on New Year's Day to celebrate the new year.

# WINTER

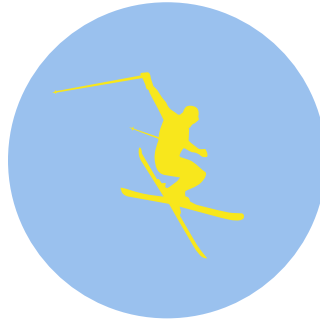
## VOCABULARY



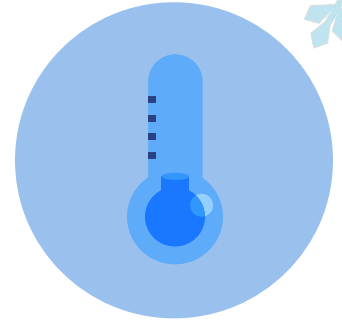
snowman



cabin



skiing



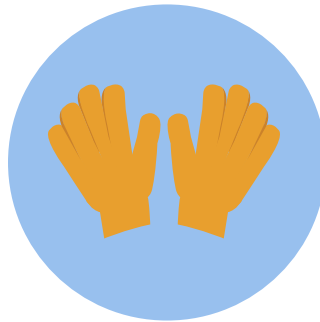
cold



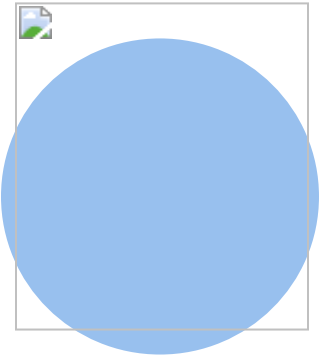
snowboarding



snow



gloves



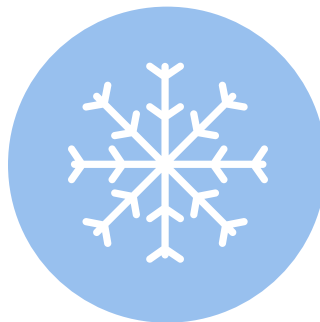
hot chocolate



hat



ice skating



snowflake



tree



Find the words below in the wordsearch.



Z	M	D	M	F	B	I	B	Y	V	Z	S	G	D	Z	S	O
N	V	Q	R	C	B	C	C	O	M	S	C	A	B	I	N	I
Q	O	G	N	Z	A	T	V	E	E	V	S	P	Q	F	O	J
T	G	L	O	V	E	S	P	G	S	V	L	L	C	P	W	M
O	R	Y	H	J	P	A	P	O	S	K	L	U	O	V	F	X
I	V	E	S	N	O	W	M	A	N	M	A	S	L	T	L	K
F	W	E	E	C	P	N	Q	U	O	O	Z	T	D	B	A	Y
C	S	K	I	I	N	G	A	R	W	F	I	D	I	U	K	Z
L	H	O	T	C	H	O	C	O	L	A	T	E	J	N	E	A
C	F	S	N	O	W	B	O	A	R	D	I	N	G	U	G	P
O	G	L	G	L	B	H	T	R	E	S	D	K	J	Y	F	W
J	C	S	Q	D	A	V	R	P	H	A	T	Q	D	S	H	L



# Animals of



# North America



The Arctic fox lives in Canada and the United States. The Arctic Fox has thick fur for living in the Arctic environment. The Arctic fox uses its fur for camouflage, changing from white in the winter to brown in the summer.



The Arctic wolf is found in Canada's frozen north. Believe it or not, the Arctic wolf is the same species as your pet dog. Domestic dogs and Arctic wolves are both subspecies of Grey wolf, *Canis lupus*.



The Bald Eagle is both the national bird and the national animal of the USA. It is found throughout North America and Canada and can live to the age of 20 to 30 years old in the wild.



Moose are large-antlered animals most commonly found in Alaska and Canada. Moose are unique among deer in that they are solitary and don't live in herds. The moose can run up to speeds of 55km per hour.



Polar bears are marine mammals. They are able to swim long distances in cold waters, being found in waters 100km offshore. They also have an amazing sense of smell, being able to sniff out food up to 16km away.

# Animal profile :

## Reindeer



### Height:

33 to 59 inch at shoulder height

### Weight:

Male 450 pounds

Female 250 pounds

### Diet:

Reindeer are ruminants. When available, they eat mosses, herbs, ferns, grasses, and the shoots and leaves of shrubs and trees, especially willow and birch.

**Class:** Mammalia

**Order:** Artiodactyla

**Family:** Cervidae

**Genus:** *Rangifer*

**Species:** *R. tarandus*



In American reindeers are called 'caribou'.

In English a male is called a buck, a female a doe and a baby is called a fawn.



Retrouvez-nous sur : [www.americavillage.fr](http://www.americavillage.fr)



# Solution



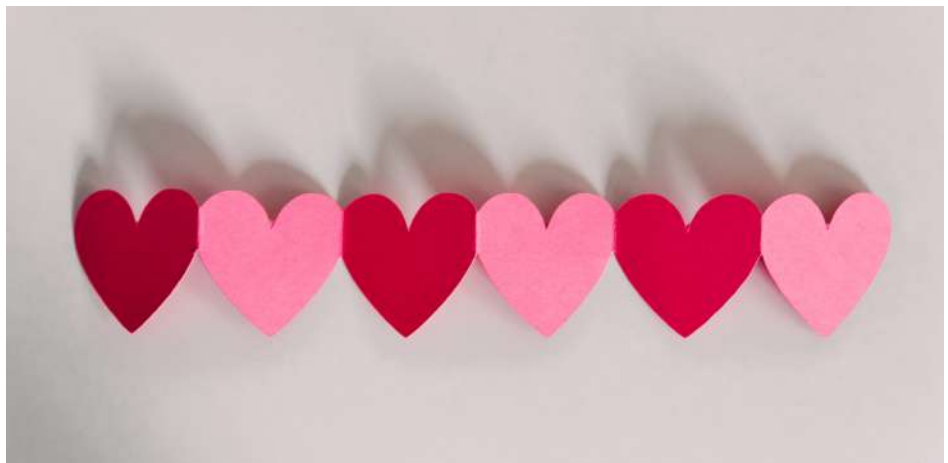
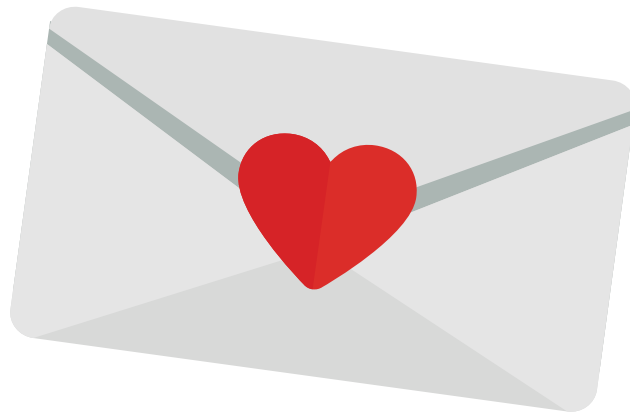
Z	M	D	M	F	B	I	B	Y	V	Z	S	G	D	Z	\$	O
N	V	Q	R	C	B	C	C	O	M	S	G	A	B	I	N	I
Q	O	G	N	Z	A	T	V	E	E	V	S	P	Q	F	O	J
T	G	L	G	V	E	S	P	G	S	V	L	L	C	P	W	M
O	R	Y	H	J	P	A	P	O	\$	K	L	U	O	V	F	X
I	V	E	S	N	O	W	M	A	N	M	A	S	L	T	L	K
F	W	E	E	C	P	N	Q	U	O	O	Z	T	D	B	A	Y
C	S	K	I	I	N	G	A	R	W	F	I	D	I	U	K	Z
L	H	O	T	G	H	O	C	O	L	A	T	E	J	N	E	A
C	F	S	N	O	W	B	O	A	R	D	I	N	G	U	G	P
O	G	L	G	L	B	H	T	R	E	S	D	K	J	Y	F	W
J	C	S	Q	D	A	V	R	P	H	A	T	Q	D	S	H	L

# NEXT MONTH



## Valentine's Day

How do you celebrate **Valentine's Day**?  
Learn more about the tradition in English speaking countries and how people celebrate the tradition.





American Village