



VOLUNTEER PROGRAM 2023



THE RED LEAF VOLUNTEER PROGRAM

The Red Leaf Volunteer Program has been designed for young adults who wish to give back to the community and experience Canadian life while improving their spoken English in an authentic setting. Participants will stay with local Canadian host families and volunteer with an organization in the community. Red Leaf Student Programs offers volunteer placement in four different areas, Community Support, Environmental Conservation, Animal Care, and Youth or Senior Programs.

The Program includes:



- Minimum 2-week placement with a qualified host
- Arrival and departure transfers between the airport and the homestay. (Included in homestay fee)
- Private room and board (3 meals a day)
- First-day orientation by the volunteer organization
- Volunteer placement in one of the areas of interest
- Completion Certificate
- 24-hour emergency support



APPLYING TO VOLUNTEER

When applying, consider what type of volunteering activities you would like to do. Keep in mind that volunteer organizations have different needs at different times of the year. Canadian winters are cold so there are few environmental conservation opportunities compared to the summer, but there are many community service organizations in need of extra helping hands. When filling in the application, indicate your first, second and third pick for type and location.

Every applicant needs the following:

- Application form
- Copy of your CV
- Police Record Check
- Photo of yourself
- A letter describing why you are interested in volunteering
- A brief introduction for your host family

Start dates are flexible, but you must apply at least 8 weeks before you want to arrive in Canada. You may be asked to do a phone interview to assess your spoken English ability. In addition some volunteer organizations may require a medical check or immunization record. If so, Red Leaf will inform you early on in the application process.



VOLUNTEERING LOCATIONS IN CANADA



HOMESTAY

During the Volunteer Program, you will stay with a local host family. Every family and homestay is unique. A typical "home" may be 2-3 bedrooms, one or more bathrooms, a living and dining room, and kitchen. It may be an apartment in a bustling city or a small house in the country side. They may be a family with children, a retiree, or a young professional with a spare room.

Your host will provide you with room and board, and help you in any way they can. Once you receive your host family's profile, we encourage you to get in touch with them. Introduce yourself and get to know your host family. They will be your best resource to learn about Canada and what to expect.

While here you will be able to reach a local coordinator or Red Leaf staff member 24 hours a day. Your information pack will list your coordinators contact information and the Red Leaf 24 hour Emergency phone number. We will also check in on you while you are here via email and phone to see how you are settling in.





COMMUNITY SUPPORT

Volunteer Profile

Volunteers must be outgoing, friendly, and flexible. The participants will contribute their time, talents and skills to enhance the care and provide service and support to the disadvantaged through organizations involved with Community Support. Examples of these are food banks, thrift stores, re-stores or support programs. These organizations depend on the support of volunteers who are motivated to help break the cycle of hunger and poverty. These organizations aid the community by distributing food to the needy, accepting donations, or selling donated materials to raise money.

Responsibilities may include:

- Unload donations from trucks.
- Sort donated items.
- Assist the public in purchases.
- Event assistance.
- Recreational activities, such as games, crafts, computer and more.
- Assisting with meals.
- Administrative help.

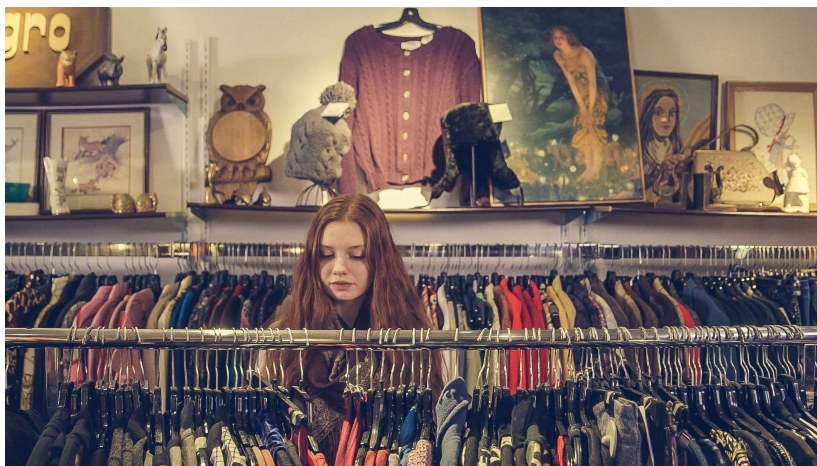


Photo by Matthew Henry from Burst



YOUTH AND SENIOR PROGRAMS

Volunteer Profile

Volunteers must be outgoing, enthusiastic, nurturing and patient. Youth programs offer a safe place for children to channel their energies through a variety of educational and social activities that focus on character, skill development and self-esteem. We partner with a variety of organizations, including after-school programs and camps that provide invaluable support to parents, children and their communities.

Like wise programs for Seniors (adults over the age of 65) need volunteers with similar skill sets to social with their clients and help run activities.

Responsibilities may include:

- Recreational programs such as sports, games, crafts, music
- Individual or group reading.
- Group field trips.
- Friendly visiting and reading.
- Supervising field trips and outings.





ENVIRONMENTAL CONSERVATION



Photo by Anna Earl on Unsplash

Volunteer Profile

Volunteers must be curious and passionate about nature and be willing to be outside in changeable weather conditions. Participants must also be in good physical condition. There are many possible placements for volunteers: botanical gardens, tree nurseries, nature parks, demonstration gardens, fisheries, watersheds, or non-profit environmental and conservation organizations. In all of them, volunteers play an important role in preserving nature. For those interested in Biology, Horticulture, or Environmental Protection, this is a great opportunity to learn and share a love of the natural world.

Responsibilities may include:

- Tree and wildflower planting
- Site restoration
- Invasive species removal
- Maintenance and care of planting sites
- Administrative assistance
- Community education and special events



ANIMAL CARE



Lisa Rieg volunteering at the
Guelph Humane Society, 2017

Volunteer Profile

Volunteers must love animals and be compassionate, caring and concerned about animal welfare. Some experience with companion animals is usually required. Participants may volunteer in Animal Protection Societies, Humane Societies or Animal Shelters. Most volunteers assist at shelters for domestic animals (cats, dogs, rabbits, and other small companion animals), however, opportunities with petting zoos, birds and sea mammals are sometimes possible. Activities available to volunteers will vary according to the organization's needs and policy, as well as the skills, experience, interests, and English level of the participants.

Responsibilities may include:

- Cleaning and general maintenance
 - Socialization through play, grooming and handling
 - Feeding/General Care
 - Cat cuddling
 - Dog walking
 - Assisting with special events such as open houses
 - Office / clerical assistance
 - Community outreach
-



APPLICATIONS AND REGISTRATION

An application to a Red Leaf program does not imply acceptance into the program which is on a first-come-first-served basis. Applicant criteria and deadlines for each type of program are on each program description. Due to limited availability, all programs must be confirmed by RLSP. Specific program registration forms may be required and will be supplied by Red Leaf. We strongly recommend the promptest registration possible, since Canada has a limited capacity and demand is extremely high. Registration deadline is eight (8) weeks prior to the program start date. Late registrations are subject to availability.



VOLUNTEER AND HOMESTAY INFORMATION

To assist in the matching of volunteers to host families, each volunteer is required to write a letter to their host family describing themselves, their family, their hobbies and interests. When the registration form and letter are received, volunteers will be matched with suitable host families. Volunteers will receive a host family profile, acceptance letter and pictures from the host family. Organizations will receive the family matches two to three weeks before the program begins. Volunteers must read and agree to the guidelines governing their participation in the program.



CONFIRMATION AND DEPOSITS

Bookings will be confirmed to Agents by email. The confirmation of an Agent's first booking for that year will indicate acceptance by the Agent of all Red Leaf reservations, payment and cancellation conditions. An application fee of \$400 is required at the time of booking. Final payment on balance is due four (4) weeks before program start date.



CANCELLATION AND REFUND

Cancellations must be received in writing at least four (4) weeks in advance to qualify for a refund of fees. The \$400 application fee is non-refundable. If a volunteer cancels the program less than four (4) weeks prior to the starting date, an additional penalty of \$200 applies. If a volunteer cancels the program after the start date, there is no refund.

Note: Students who are unable to travel due to COVID-related reasons will receive a full refund. COVID-related reasons include:

a) Contraction of COVID by the student or a member of the student's immediate family. In this case, a positive COVID test must be provided.

b) Changes to the government policies which result in the student no longer being able to enter in the country. In this case, the specific policy change must have occurred between the time of registration and the cancellation. It is each student's responsibility to ensure that they meet eligibility requirements in effect at the time of registration.



PAYMENT

Payment must be made in the form of a wire transfer or by cheque made out in Canadian dollars to the order of Red Leaf Student Programs Inc. Any transfer fees are the responsibility of The Agent. A 3.5% surcharge will be applied for payments made with credit cards. Payments must be remitted to:

BANK NAME: Royal Bank of Canada RBC
Address: 2346 Yonge St. Toronto, Ontario CANADA
Phone #: +1-416-974-1715
Account Name: Red Leaf Student Programs Inc.

Account No.: 101-763-1
Transit: 06722
IBAN: 021000021
SWIFT: ROYCCAT2



Red Leaf education in Canada